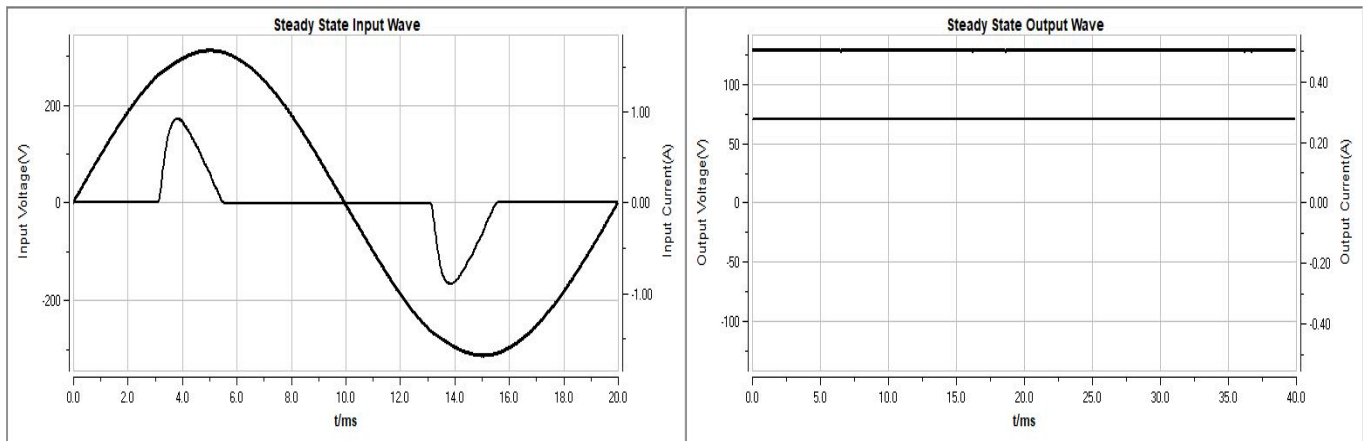


Synthesized Test Report

Steady State Vol Range(%) :	Load Adjustment(%) :
Voltage Adjustment(%) :0.1	Power Factor:
Full Load Efficiency(%) :	Input Impact Cur(A) :1.702
Vol Ripple(V) :0.0	Cur Ripple(A) :0.013
Start-up Time(s) : ---	Overshoot Margin Vol of Start(%) :



Steady State Test Condition: Input Vol:220.0V Mid Load Cur

LED Drive Power Type: Con Voltage

Rank According to <<Lighting LED Drive Power Standard>>: ---

Qualify According to Custom Define: ---

Model:LED driver 36W
 Manufactory:ELMARK
 Date:2017-11-15
 Humidity(%) :65
 Test Device: EVERFINE LT-101A

Number:LED driver 36W SHINE36 LED
 Tester:Petya Marinova
 TMP(deg.) :20
 Remarks:O17V037B_4080

Steady State Test Data

Steady State Test Data

1. Condition: Input Vol:190.0V Mid Load Cur
Input: U:190.3V I:0.334A P:38.32W PF:0.603 F:50.01Hz η : 93.2% Output: U=128.9V I=0.277A P=35.71W
2. Condition: Input Vol:220.0V Mid Load Cur
Input: U:220.2V I:0.299A P:37.95W PF:0.576 F:50.01Hz η : 93.5% Output: U=128.6V I=0.276A P=35.49W
3. Condition: Input Vol:240.0V Mid Load Cur
Input: U:240.2V I:0.281A P:37.79W PF:0.560 F:50.01Hz η : 93.8% Output: U=128.4V I=0.276A P=35.44W

Adjustment Test Data

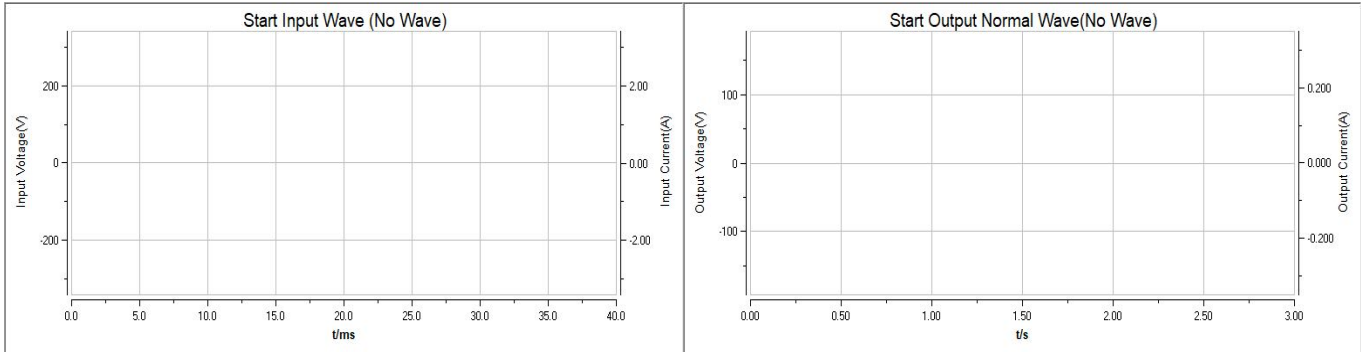
1. Condition: Input Vol:220.0V Mid Load Cur
Input: U:220.2V I:0.298A P:37.78W PF:0.576 F:50.01Hz η : 93.7% Output: U=128.3V I=0.276A P=35.41W
2. Condition: Input Vol:190.0V Mid Load Cur
Input: U:190.3V I:0.331A P:37.93W PF:0.602 F:50.01Hz η : 93.3% Output: U=128.2V I=0.276A P=35.38W
3. Condition: Input Vol:220.0V Mid Load Cur
Input: U:220.2V I:0.297A P:37.65W PF:0.576 F:50.00Hz η : 93.6% Output: U=128.2V I=0.275A P=35.25W
4. Condition: Input Vol:240.0V Mid Load Cur
Input: U:240.2V I:0.280A P:37.63W PF:0.560 F:50.01Hz η : 93.6% Output: U=128.1V I=0.275A P=35.23W

Model:LED driver 36W
Manufactory:ELMARK
Date:2017-11-15
Humidity(%):65
Test Device: EVERFINE LT-101A

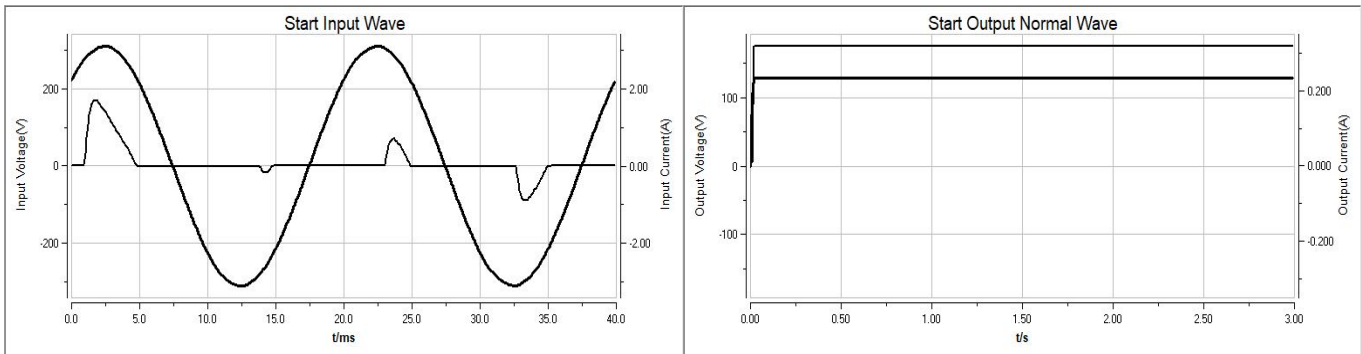
Number:LED driver 36W SHINE36 LED
Tester:Petya Marinova
TMP(deg.):20
Remarks:017V037B_4080

Start-up Input/Output Wave

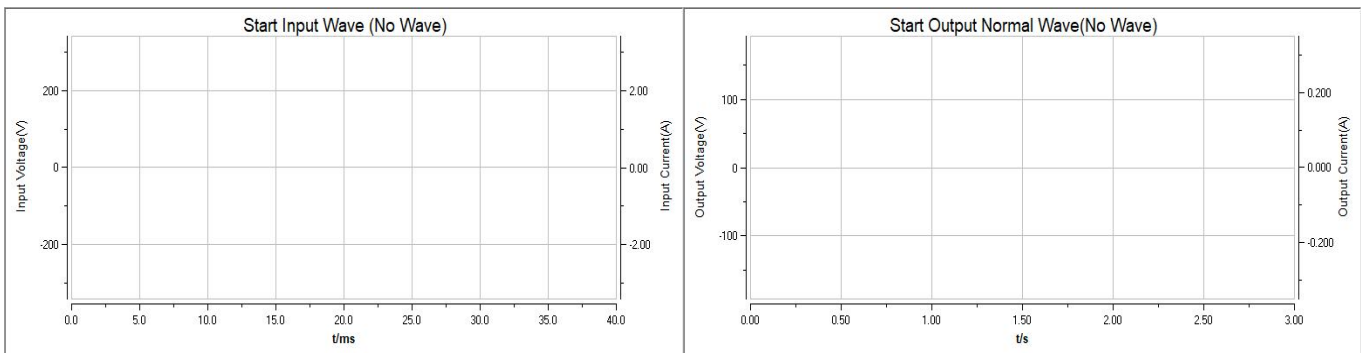
1. Input Vol:220.0V Min Load Cur



2. Input Vol:220.0V Mid Load Cur



3. Input Volt:220.0V Max Load Cur



Model:LED driver 36W
Manufactory:ELMARK
Date:2017-11-15
Humidity(%):65
Test Device: EVERFINE LT-101A

Number:LED driver 36W SHINE36 LED
Tester:Petya Marinova
TMP(deg.):20
Remarks:O17V037B_4080

Start-up Test Data**1. Condition: Input Vol: 220.0V Mid Load Cur**

Input Parameters: Impact Cur: 1.702A

Peak Vol: -311.5V

Output Parameters: Start-up Time: 0.01s

Peak Vol: 128.5V

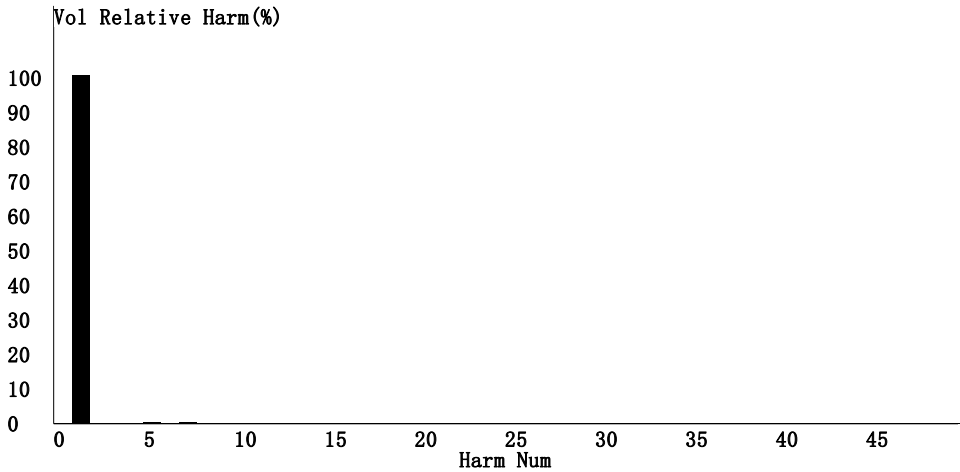
Peak Cur: 0.317A

Model:LED driver 36W
Manufactory:ELMARK
Date:2017-11-15
Humidity(%):65
Test Device: EVERFINE LT-101A

Number:LED driver 36W SHINE36 LED
Tester:Petya Marinova
TMP(deg.):20
Remarks:017V037B_4080

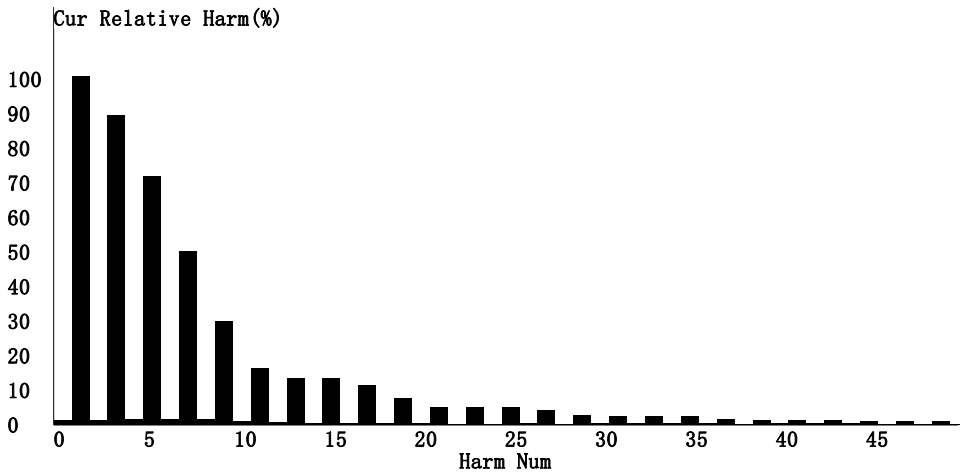
Steady State Input Harm Wave

Steady State Input Vol Harm Wave



Input Vol Harm IEC:0.5%
 Input Vol Harm CSA:0.5%
 1degree Relative Harm:100.0%

Steady State Input Cur Harm Wave



Input Cur Harm IEC:131.4%
 Input Cur Harm CSA:79.6%
 0degree Relative Harm:1.1%
 1degree Relative Harm:100.0%
 2degree Relative Harm:1.2%
 3degree Relative Harm:88.9%
 4degree Relative Harm:1.5%
 5degree Relative Harm:71.1%
 6degree Relative Harm:1.7%
 7degree Relative Harm:49.8%
 8degree Relative Harm:1.4%
 . . .

Steady State Input Vol and Cur Harm Test Condition:
 Input Vol:220.0V Mid Load Cur

Model:LED driver 36W
 Manufactory:ELMARK
 Date:2017-11-15
 Humidity(%):65
 Test Device: EVERFINE LT-101A

Number:LED driver 36W SHINE36 LED
 Tester:Petya Marinova
 TMP(deg.):20
 Remarks:O17V037B_4080

Steady State Input Harm Data

Harm Num	Vol Harm(V)	Vol Relative Harm(%)	Cur Harm(A)	Cur Relative Harm(%)	Cur Harm per(mA/W)
1	220.2	100.0	0.181	100.0	4.780
2	0.4	0.2	0.002	1.2	0.055
3	0.2	0.1	0.161	88.9	4.249
4	0.2	0.1	0.003	1.5	0.072
5	0.6	0.3	0.129	71.1	3.401
6	0.2	0.1	0.003	1.7	0.079
7	0.5	0.2	0.090	49.8	2.381
8	0.0	0.0	0.003	1.4	0.068
9	0.2	0.1	0.054	29.7	1.420
10	0.1	0.0	0.002	1.0	0.048
11	0.1	0.1	0.029	16.2	0.776
12	0.0	0.0	0.001	0.6	0.027
13	0.1	0.0	0.024	13.1	0.625
14	0.0	0.0	0.001	0.4	0.020
15	0.1	0.0	0.024	13.4	0.639
16	0.0	0.0	0.001	0.5	0.024
17	0.1	0.1	0.021	11.3	0.542
18	0.0	0.0	0.001	0.4	0.021
19	0.1	0.0	0.014	7.6	0.364
20	0.0	0.0	0.001	0.3	0.014
21	0.1	0.0	0.009	4.9	0.235
22	0.0	0.0	0.000	0.2	0.009
23	0.0	0.0	0.009	4.8	0.231
24	0.1	0.0	0.000	0.2	0.008
25	0.1	0.0	0.009	4.9	0.236
26	0.1	0.0	0.000	0.2	0.012
27	0.0	0.0	0.007	4.0	0.190
28	0.0	0.0	0.000	0.2	0.008
29	0.0	0.0	0.005	2.7	0.128
30	0.0	0.0	0.000	0.2	0.012
31	0.0	0.0	0.004	2.3	0.108
32	0.0	0.0	0.001	0.3	0.016
33	0.0	0.0	0.005	2.5	0.119
34	0.0	0.0	0.001	0.4	0.018
35	0.0	0.0	0.004	2.3	0.109
36	0.0	0.0	0.000	0.3	0.013
37	0.0	0.0	0.003	1.6	0.078
38	0.0	0.0	0.000	0.2	0.009
39	0.0	0.0	0.002	1.2	0.057
40	0.0	0.0	0.000	0.2	0.009
41	0.0	0.0	0.002	1.3	0.060
42	0.0	0.0	0.000	0.2	0.011
43	0.0	0.0	0.002	1.3	0.060
44	0.0	0.0	0.000	0.2	0.010
45	0.0	0.0	0.002	1.0	0.048
46	0.0	0.0	0.000	0.2	0.007
47	0.0	0.0	0.002	0.9	0.041
48	0.0	0.0	0.000	0.1	0.005
49	0.0	0.0	0.002	0.9	0.043
50	0.0	0.0	0.000	0.1	0.006

Model:LED driver 36W
 Manufactory:ELMARK
 Date:2017-11-15
 Humidity(%):65
 Test Device: EVERFINE LT-101A

Number:LED driver 36W SHINE36 LED
 Tester:Petya Marinova
 TMP(deg.):20
 Remarks:O17V037B_4080